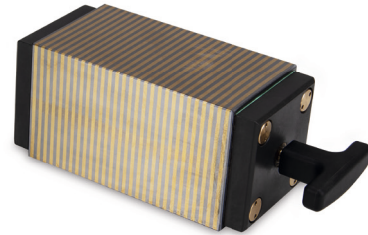
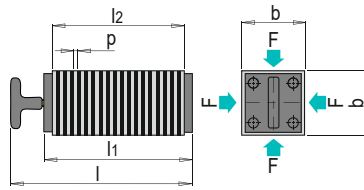


PRODUCT DESCRIPTION

- » Ideal for grinding, sinker and wire EDM, measuring and testing
- » Stainless design with high-alloy chrome steel poles is particularly suitable for use on wire EDM machines
- » Simple activation of the magnetic field by means of the rotary knob
- » Interference-free magnetic field on all 4 clamping surfaces of only approx. 2 mm
- » Hermetic sealing against the penetration of liquids



AP ¹⁾	p ²⁾	F ³⁾	l	l1	l2	b	Version	No.	EUR
4	2 + 2	80	175	138	115	64	Standard	HWS 730/115/64	<>
4	2 + 2	50	175	138	115	64	Stainless	HWS 730/115/64-Niro	<>
4	2 + 2	80	195	158	135	64	Standard	HWS 730/135/64	<>
4	2 + 2	50	195	158	135	64	Stainless	HWS 730/135/64-Niro	<>

1) AP: Wear of pole faces

2) p: Pole pitch

3) F: Nominal holding force [N/cm²]